

Raleigh Union Station

510 W. Martin Street

The City of Raleigh and NCDOT have constructed a new train station in the city's downtown Warehouse District to accommodate current and future demand for intercity passenger rail, commuter rail, buses, taxis, bicycles and other forms of transportation – Raleigh Union Station.



RUS Project Cost:	
\$88.8M	
Local	\$25.9M
State	\$9M
Federal (FRA):	
TIGER and ARRA	\$53.9M
RUS Supporting Projects:	
\$21.6M	
State	\$5.1M
Federal (FRA):	
Congestion Mitigation	\$16.5M

The new station, Raleigh Union Station (RUS), replaces the old Amtrak Station on Cabarrus Street, whose size and location cannot accommodate current ridership demand or expected growth. The project reused an industrial building that had been vacant since 2005. The 26,000 square foot building provides 9,200 square feet of passenger areas, more than five times the space of the former station.

The passenger concourse between the station and the high-level boarding platform provides natural light throughout its length and

a wonderful view of the Raleigh skyline. The artistic metal sheets adorning one wall of the concourse were salvaged from the original industrial building. The new 920 foot-long center island platform offers level boarding, and is fully ADA compliant. This is the first high-level platform in North Carolina.

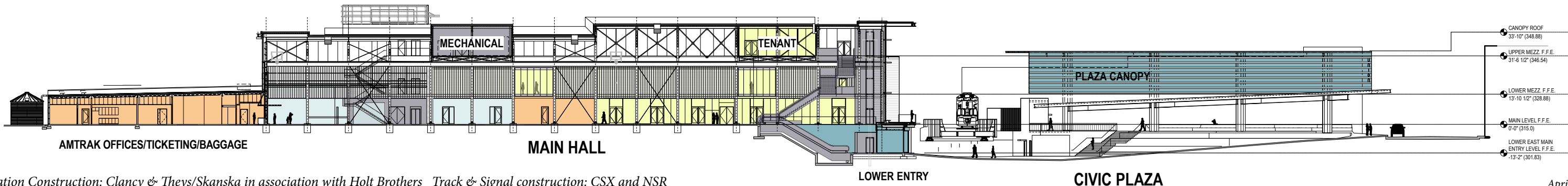
The tracks built to serve the station are for passenger trains only, and remove all boarding and detraining activities off of the mainline railroad so that freight trains may pass the station without delays. There are

convenient passenger drop-off areas adjoining the station. Ample short and long term parking is provided for passengers and visitors.

Beginning in June 2018 Amtrak and NCDOT will offer four daily round trips between Raleigh Union Station and Charlotte. The station also serves Amtrak's long-distance Silver Star passenger train, providing service to the North East and Florida.

Timeline			
2013-15	January 2016	May 2016	May 2018
Station and track design, funding, environmental, ROW, public input	Station construction began	Track and signal work began	Station complete

Raleigh Union Station is owned by the City of Raleigh. The state-supported passenger train service between Raleigh and Charlotte is operated by Amtrak.



Station Construction: Clancy & Theys/Skanska in association with Holt Brothers Track & Signal construction: CSX and NSR

